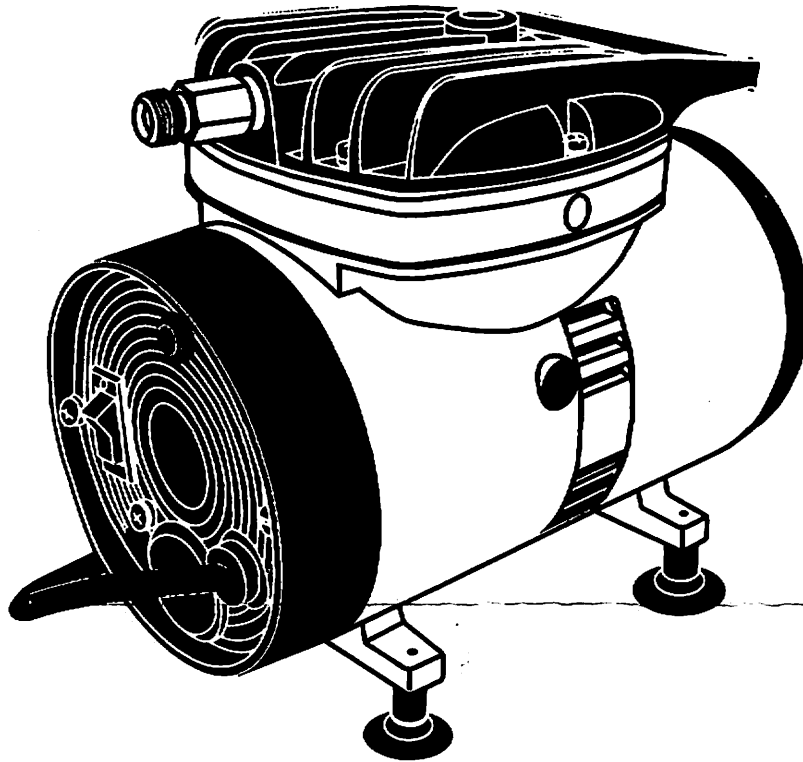




# **BADGER AIRBRUSH MODEL 180-12 COMPRESSOR**



## **1/10HP Airbrush Compressor w/pressure switch**

### **SPECIFICATION**

Horsepower	(HP)	1/10 HP
Displacement	(cfm / L/min)	2 cfm / 56.6 L/min
Max. Pressure	(psi / kg/cm <sup>2</sup> )	42 psi / 2.95 kg/cm <sup>2</sup>
Pressure Switch Setting		Cut Out - 42 psi / 2.95 kg/cm <sup>2</sup>
		Cut in - 32 psi / 2.25 kg/cm <sup>2</sup>
AMP 110V	(A)	1.45A
Free Speed (60Hz)	(r.p.m.)	1720 r.p.m.
Weight	(lbs / (kgs))	9.0 lbs / 4.2 kgs

# OPERATING INSTRUCTIONS

## BADGER MODEL 180-10&180-12

\*READ THIS MANUAL THOROUGHLY BEFORE OPERATING

### **APPLICATION:**

This compressor is designed for airbrushing and other pneumatic tools which operate within output performance of unit. This compressor operates with a 1/10 hp electrical motor to reach top efficient operation. Light weight and tankless design allows for easy mobility.

### **FEATURES:**

This compressor features quiet lubrication-free operation and utilize any household circuit, e.g. 115V (See the volt indication on compressor.)

### **ACCESSORY:**

Air hose adapter...1/4" NPSM

### **GROUNDING INSTRUCTIONS:**

This product must be grounded. In the event of an electrical short circuit, grounding reduces the risk of electric shock by providing an escape wire for the electric current. This product is equipped with a cord having a grounding wire with an appropriate grounding plug. The plug must be plugged into an outlet that is properly installed and grounded in accordance with all local codes and ordinances.

**WARNING** - Improper installation of the grounding plug is able to result in a risk of electric shock. When repair or replacement of the cord or plug is required, do not connect the grounding wire to either flat blade terminal. The wire with insulation having an outer surface that is green with or without yellow stripes is the grounding wire.

Substitution of the signal word "**DANGER**" for "**WARNING**" is not prohibited when the risk associated with the product is such that a situation exists which if not avoided will result in death or serious injury.

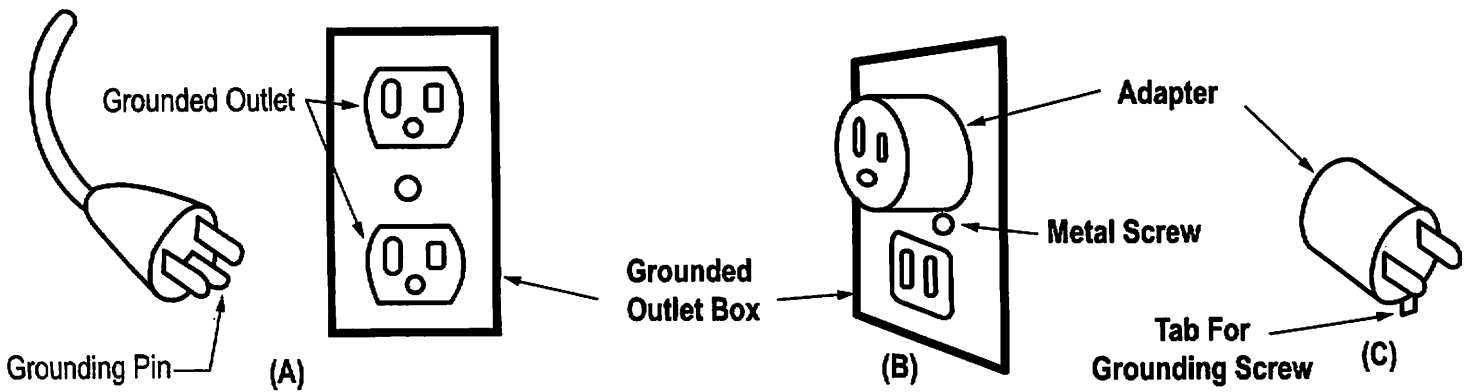
Check with a qualified electrician or serviceman when the grounding instructions are not completely understood, or when in doubt as to whether the product is properly grounded. Do not modify the plug provided; if it does not fit the outlet, have the proper outlet installed by a qualified electrician.

b) For a grounded, cord-connected product rated less than 15 A and intended for use on a nominal 120-V supply circuit, the instructions in either (1) or (2):

1) This product is for use on a nominal 120-V circuit, and has a grounding plug similar to the plug illustrated in sketch A in Figure 68.1. A temporary adapter similar to the adapter illustrated in sketches B and C may be used to connect this plug to a 2-pole receptacle as shown in sketch B when a properly grounded outlet is not available. The temporary adapter shall be used only until a properly grounded outlet (sketch A) is installed by a qualified electrician. The green colored rigid ear, lug, or similar part extending from the adapter must be connected to a permanent ground such as a properly grounded outlet box cover. Whenever the adapter is used, it must be held in place by a metal screw.

2) This product is for use on a nominal 120-V circuit and has a grounding plug similar to the plug illustrated in sketch A in Figure 68.1. Only connect the product to an outlet having the same configuration as the plug. Do not use an adapter with this product.

**Figure 68.1**  
**Grounding methods**



**AA200**

**RULES FOR SAFE OPERATION:**

1. This compressor should be located in a dry and well ventilated area.
2. Air compressors generate heat under normal operating conditions. To avoid serious burns, never touch compressor head or any other compressor part during or immediately after operation.
3. Compressed air must never be aimed at anyone because it can cause serious injury.
4. Service/repair should be performed by an authorized service center.
5. When compressor is not in use, wrap cord around compressor and store in dry place. Avoid damage to cord.

**CAUTION:**

When a flammable paint or liquid is sprayed there is a danger of fire or explosion, especially in a closed room. Never spray in the presence of an open flame. Locate the compressor a maximum distance from the spraying area. If humidity is very high a water trap should be installed in the air line some distance from the compressor to remove excessive moisture.

**DO NOT CARRY COMPRESSOR WHILE SPRAYING.**

**FULL WARRANTY FOR BADGER AIRBRUSH COMPRESSOR**

BADGER AIR-BRUSH COMPANY warrants to the purchaser that it's compressor will be free from defects in material and workmanship for a period of one(1) year.

A compressor failing within the warranty period due to defects in material and workmanship will be repaired or replaced, at Badger's option, without charge to the purchaser when returned with proof of purchase to the BADGER AIR-BRUSH CO., transportation prepaid by purchaser.

This warranty excludes equipment which has been subjected to corrosion, negligence, accident or units which have been altered or abused in any way.

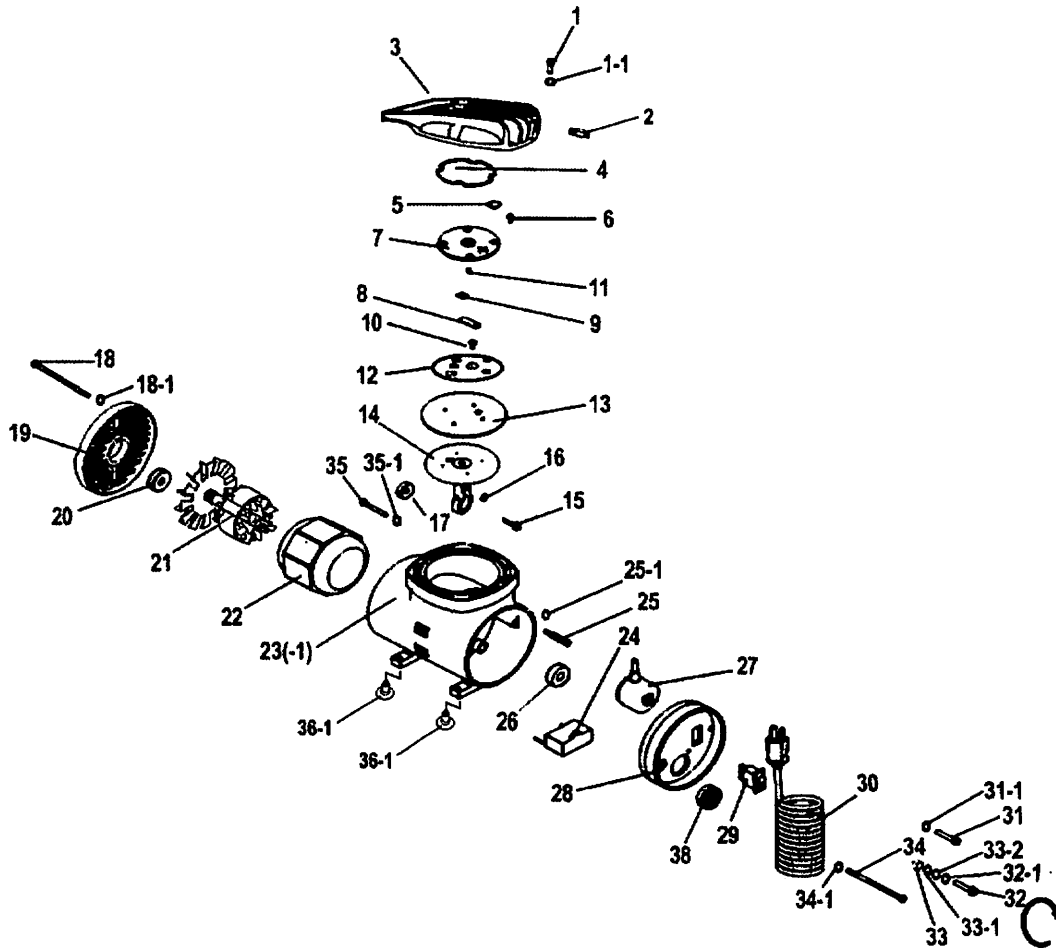
**BADGER AIR-BRUSH CO.**

9128 West Belmont Ave. Franklin Park, IL. 60131

Web Address [www.badgerairbrush.com](http://www.badgerairbrush.com)

Phone 800-AIRBRUS(H)

# 180-10 & 180-12 1/10HP AIRBRUSH COMPRESSOR



## PARTS LIST

No.	Parts No.	Description	Q'ty
1	A-01	Head Screw (0.7"/L)	6
1-1	A-01-1	Washer (I.D. 4.5 mm)	6
2	A-02	Outlet Fitting	1
3	A-03	Head	1
4	A-04	Head O-Ring	1
5	A-05	Umbrella Valve	1
6	A-06	Exh.Pl.ate Screw (0.32"/L)	4
7	A-07	Exhaust Valve Plate	1
8	A-08	Flapper Valve	1
9	A-09	Flapper Valve Washer	1
10	A-10	Flapper Valve Screw	1
11	A-11	Inlet Valve Screw (0.4"/L)	4
12	A-12	Intake Valve Plate	1
13	A-13	Diaphragm	1
14	A-14	Connecting Rod	1
15	A-15	Connecting Rod Screw	1
16	A-16	Washer (I.D. 4.0 mm)	1
17	A-17	Connecting Rod Bearing	1
18	A-18	Rear Cap Screw (3.8"/L)	2
18-1	A-18-1	Washer (I.D. 4.5 mm)	2
19	A-19	Rear Cover	1
20	A-20	Rear Bearing	1
21	A-21	Shaft, Rotor & Fan Assy	1
22	A-22	Stator	1

No.	Parts No.	Description	Q'ty
23	A-23	Housing with seal (For 180-12)	1
23-1	A-23-1	Housing (For 180-10)	1
24	A-24	Capacitor	1
25	A-25	Capacitor Mount Screw	1
25-1	A-25-1	Star Washer	1
26	A-26	Front Bearing	1
27	A-27	Pressure Switch (For 180-12)	1
28	A-28	Front Cover	1
29	A-29	Switch	1
30	A-30	Cord	1
31	A-31	Front Cover Screw (1.3"/L)	1
31-1	A-31-1	Washer (I.D. 4.5 mm)	1
32	A-32	Screw (I.D. 0.6"/L)	1
32-1	A-32-1	Washer (I.D. 4.5 mm)	1
33	A-33	Nut	1
33-1	A-33-1	Washer (I.D. 4.5 mm)	1
33-2	A-33-2	Star Washer	1
34	A-34	Front Cover Screw (2.68"/L)	1
34-1	A-34-1	Washer (I.D. 4.5 mm)	1
35	A-35	Stator Screw (1.68"/L)	1
35-1	A-35-1	Washer (I.D. 4.5 mm)	1
36-1	A-36-1	Rubber Foot w/Screw(M5x0.8)	4
38	A-38	Sponge	1